

SG Holdings Co., Ltd. | Corporate profile



**Grow the new Story.**  
New logistics, nurturing a new society together.

## Top Message

# Grow the new Story.

## New logistics, nurturing a new society together.

**Eiichi Kuriwada**  
Chairperson and CEO  
SG Holdings Co., Ltd.

栗和田 栄一



**Hidekazu Matsumoto**  
President and COO  
SG Holdings Co., Ltd.

松本 秀一



The SG Holdings Group is a comprehensive logistics group that meets all logistics needs of customers, from upstream to downstream. Since the Group was founded in 1957, we have conducted logistics business while inheriting the “hikyaku no kokoro” (the spirit of Edo-era express messengers) of constantly thinking about what we can do for customers and acting with the best of intentions. We are also continuing to embrace the challenge of providing new logistics value to customers based on the corporate philosophy of “Trust, Create, Challenge.”

In recent years, in addition to the shrinking workforce caused by the declining birthrate and aging population that has been an issue for some time, the social environment surrounding us has undergone change at a dramatic pace never seen before, such as efforts aimed at the government’s goal to make Japan carbon neutral by 2050, advances in AI and IoT technology, and the promotion of DX. Furthermore, we have also seen a transition to an era that could not be predicted by anyone, due to factors such as the spread of COVID-19.

In order to respond to this rapidly changing social environment, we have established a long-term vision of “Grow the new Story. New logistics, nurturing a new society together.” aimed at 2030. This vision is based on the intent to combine the strengths of customers, diverse

partners and colleagues to transform logistics with the aim of creating value that will lead us into the future.

“SGH Story 2024,” which is the initial three-year plan marking the first step toward this long-term vision, started in FY2022. The basic policy of this three-year plan is “creation of next-generation competitive advantages to realize sustainable growth,” and we will engage in “enhancement of comprehensive logistics solutions,” “expansion of management resources leading to the creation of competitive advantages” and “further advancement of governance.”

The strength of the SG Holdings Group is the ability to gather information through Sales Drivers®, which are our contact with customers. In addition, we have the comprehensive ability to meet all of the needs of customers by utilizing a variety of resources such as delivery, logistics, real estate, IT and vehicle maintenance. We will fully utilize this strength to provide logistics services that are valuable for society and customers, and sincerely engage in business activities going forward to continue to grow with you.

Looking ahead, we will use the “hikyaku no kokoro” as a source of strength as we aim to become a corporate group trusted by all stakeholders by providing optimal solutions adapted to the times. We appreciate your unwavering support.

# Our Corporate Philosophy and Guiding Principles

Ethical principles guiding the behavior of each and every employee.

Consistent ethical behavior builds trust with customers and shapes the SG Holdings Group.

## Corporate Philosophy

### “Trust, Create, Challenge”

SG Holdings Group will:

- Earn the trust of customers and society and grow together;
- Create new value, contributing to social development;
- Always take on the challenges presented to us, pursuing all possibilities.

The Corporate Philosophy has been renewed while preserving the cornerstone of the company's foundation, “Hikyaku no Kokoro” (the spirit of Edo-era express messengers).

Our philosophy embodies the spirit of evolution and innovation towards a better future.

## Charter of Corporate Conduct

In tandem with the Corporate Philosophy, the charter declares that legal compliance based on ethical principles is an essential part of fulfilling social responsibility.

## Code of Ethics and Conduct

The code specifies the conduct that all officers and employees adhere to in order to fulfill the spirit of the Charter of Corporate Conduct.

# Grow the New logistics, nurturing

## For the creation of logistics that continue to be required by society

The SG Holdings Group established “Grow the new Story: New logistics, nurturing a new society together” as its long-term vision. The Group will focus on significantly growing comprehensive logistics solutions such as TMS, 3PL and global and overseas business while aiming to stably expand the Group’s core business in express package delivery services. We will also actively promote initiatives aimed at the resolution of social and environmental issues such as decarbonization.

With the aim of realizing a sustainable society, we will continue to follow a new growth story creating new value through the creation of new logistics leading to the future with all stakeholders.

### Solution



### Social



### Smart





# new Story.

## a new society together.

### Grow

This reflects our desire to grow and develop a new society and story together with our partners through the power of logistics. We will seek to create innovation and create next-generation competitive advantages in an open environment with a variety of companies and employees including not only those in the Group but also our customers.

### Story

Through solutions provided by the Group, we wish to contribute to a new society (a sustainable society) and set out on a new growth story. The “S” that is the first letter represents our desire for the Group as a whole to engage in all the important themes including **SGH, SAGAWA, Solution, Social, Smart, Share** and **Sustainable**.

#### Share



#### Sustainable







4

**Improvement of profitability through enhancement of service and improvement of efficiency in express package delivery service**

By improving the efficiency of our operations through the promotion of DX, we aim to achieve sustained business growth through the enhancement of service and the profitability of express package delivery services.

5

**Strengthening domestic and overseas transportation network including alliances**

By actively proceeding with capital investment and alliances with diverse partner companies, we will further expand and strengthen our transportation networks in Japan and overseas.

6

**Investment in human capital and improvement of employee engagement**

We aim to further improve engagement through initiatives such as development of specialized personnel, introduction of new systems, enhancement of training and education, promotion of diversity and fostering a corporate culture enabling people to challenge themselves.

**Value provided to customers and society**

Support for the creation of sustainable and dynamic supply chains and value chains

**Mid-term Management Plan**

**「SGH Story 2024」**

The SGH Story 2024 Mid-Term Management Plan was formulated as the first three years to take the first step in the Long-Term Vision.

**Basic Policy**

**Creation of next-generation competitive advantages to realize sustainable growth**

# Overseas

## Overseas

- International air transportation
- International marine transportation
- Local express package delivery service
- Processing at warehouses

## Warehouse services

- Storage and processing services
- Inspection and needle detection services
- Sorting
- E-commerce services
- Product return services
- Inventory management

## Logistics centers

## Import and Export

- Customs clearance
- Bonded warehousing

## Transfer centers

## Real Estate

- Real estate management
- Real estate operations
- Renewable energy business

## Computer systems

- System consulting
- System operation and maintenance

## Personnel dispatch services

## Vehicles

- Vehicle sales
- Maintenance
- Truck body manufacturing

# One-stop Solutions Covering All Business Fields

We optimize customer logistics by providing integrated solutions extending from the upstream to downstream business fields, from procurement outside Japan and logistics processes to last-mile delivery to consumers.

## Specialty transport

- Office and factory relocation
- Transport and installation of furniture, appliances, office equipment (including air conditioning and gas heating equipment)
- Artworks transportation

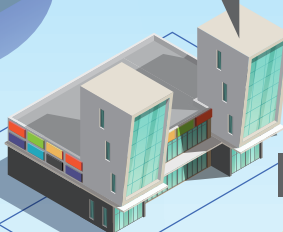
## Offices and facilities



## Commercial facilities

- Centralized management of facility logistics
- Cleaning
- Security

## Large-scale commercial facilities



## Retail stores



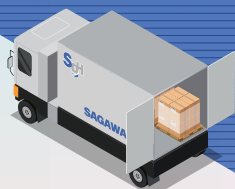
## Financial services

- Settlement agency
- Internet settlement services
- E-money settlement services

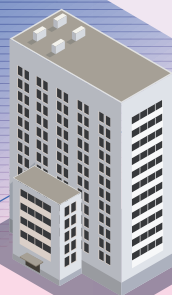


Delivery

- Baggage collection and delivery
- Delivery agency for department stores and large-scale retailers
- Telegram-like services



Companies



Individuals



Japan







## Main services



Providing one-stop solutions solving logistics challenges

# Delivery business

### Providing logistics solutions driven by the core express package delivery business

We offer optimized delivery solutions by leveraging a nationwide transport network in Japan and grasping the diversifying logistics challenges of our customers. This approach allows us to offer not only such basic delivery services as express package delivery, large item delivery, and chilled and frozen international air transportation, but total solutions such as facility logistics and integrated logistics covering sites outside Japan.



### Facilitating installation and transport and various other types of moving

We facilitate “delivery plus” services primarily for companies, R&D facilities, and educational institutions, which span moving, assembly, equipment installation, and interior construction. Our services expand with the needs of our customers to include specialty transportation for such items as artworks and precision machinery.



### Providing third-party delivery to department stores and other high-quality logistics services

We act as the designated transport agent for leading nationwide department stores and large retailers. These services include product shipment, value-added processing, and inventory management, as well as stockyard management support. We maintain a license for the manufacture of cosmetics and quasi-drugs, enabling us to provide such sophisticated services as luxury cosmetics storage and shipment.



### Telegram-like services deliver heartfelt thoughts and words for special occasions

We leverage our nationwide delivery network in Japan to timely deliver messages for such ceremonies as weddings, funerals, and personnel appointments. We boast an abundant variety of product designs to meet the many needs of our customers. Our aim is to provide superior telegram-like services with specialized product packaging as well as detailed delivery times.



## Group companies

### SAGAWA

#### Sagawa Express Co., Ltd.

Head office: 68 Kamitobatsunoda-cho,  
Minami-ku, Kyoto-shi, Kyoto,  
Japan

<https://www.sagawa-exp.co.jp/english/>

### Sg humony

#### Sagawa Humony Co., Ltd.

Head office: 2-2-8 Shinsuna, Koto-ku,  
Tokyo, Japan

<http://www.humony.co.jp/>

### Sg moving

#### SG Moving Co., Ltd.

Head office: 6F X FRONTIER EAST,  
3-2-9 Shinsuna, Koto-ku,  
Tokyo, Japan

<https://www.sagawa-mov.co.jp/>

### WORLD SUPPLY

#### World Supply Co., Ltd.

Head office: 1-2-22 Ariake, Koto-ku,  
Tokyo, Japan

<https://www.world-supply.co.jp/>







## Main services



Optimizing supply chains with integrated services worldwide

# Logistics & International Transportation services

## Efficient product storage and logistics process support

We optimize the entire logistics operations of our customers by offering services that match their products and business models, from apparel and cosmetics to mail-order products. We provide logistics equipment to meet each customer need, including our proprietary warehouse management system S-WMS, sorters, automated packaging, and RFID systems to raise operational efficiency. With these advantages, we guarantee optimized logistics solutions.



## 3PL services leveraging Group synergy

As our customers' third-party logistics (3PL) partner, we resolve their management issues by optimizing the entire supply chain, from upstream through downstream functions. Our goal is to help customers reduce lead times by providing one-stop services combining the Group's capabilities, from product warehousing, processing, and other services within the warehouse, to bonded warehouse procedures for import and export.



## Integrated international logistics combining optimal transportation modes

We leverage a logistics network spanning 34 countries and regions, from Asia—our primary region—to Europe, the United States, and Africa. With this geographic reach, we have the ability to provide freight forwarding, international express services, and other optimized transportation modes. Our integrated logistics solutions are ideal for warehousing and storage, product inspection and needle detection, logistics processing, sorting, bonded warehousing, hazardous goods handling, and EC services.



## High-quality delivery services in local communities around the world

We provide one-stop support for customers' global expansion by combining our local networks in Japan and other countries with our know-how in international logistics. In local communities around the world, the SG Holdings Group provides high-quality, safe, and secure delivery services.



## Group companies



### Sagawa Global Logistics Co., Ltd.

Location: 1-1-1 Katsushima, Shinagawa-ku,  
Tokyo, Japan  
<http://www.sagawa-logi.com/>



### SGH Global Japan Co., Ltd.

Head office: 5F X FRONTIER WEST, 3-2-9 Shinsuna,  
Koto-ku, Tokyo, Japan  
<https://www.sgh-globalj.com/english/index.html>



### Expolanka Holdings PLC

Head office: 15A, Clifford Avenue, Colombo 03,  
Sri Lanka  
<https://www.expolanka.com/>



Changing business with logistics facilities

# Real Estate business

## Main services

Real estate  
management

Real estate  
development

Asset  
management

## Enhancing added and supporting the effective use of real estate

We assist customers in maximizing real estate income and value by optimizing property management and operations. As real estate management professionals, we aim to maximize customer value by providing optimized management services leveraging the operational know-how we have accumulated in operating about 900 delivery and logistics businesses and sites.



## Supporting business through logistics sites

We develop real estate properties to optimize the logistics operations essential to our business. These properties include multi-tenant logistics facilities used by a wide range of customers as well as custom-built facilities designed for specific needs. With a long track record of successful development, we offer optimized real estate services to our customers.



## Offering investment opportunities featuring logistics facilities

We operate private-subscription REITs and private-subscription investment funds, providing investment opportunities into logistics facilities that act as infrastructure assets connecting living, industry, and society. With a medium- to long-term view, we aim to secure stable income and steadily develop operational assets.



## Group companies



### SG Realty Co., Ltd.

Head office: 68 Kamitobatsunoda-cho, Minami-ku, Kyoto-shi,  
Kyoto, Japan  
<https://www.sg-realty.co.jp/>



### SG Assetmax Co., Ltd.

Head office: 2F Shinsuna SGH Bldg, 1-8-10 Shinsuna,  
Koto-ku, Tokyo, Japan  
<https://www.sg-assetmax.co.jp/>

# Logistics Related businesses



## Insurance sales

As a casualty insurance agent, we provide a wide range of insurance solutions, from policies covering property custodianship and collection and delivery vehicles, to private car insurance and income security coverage.



## Planning and sales

We offer planning and sales services, including original design merchandise, travel products, and event services. We also provide wholesale flower and ornamental plant sales to corporate customers via the Group's logistics network.



## Vehicle maintenance / Truck body manufacturing

We conduct vehicle repair, inspection, and maintenance, as well as truck body manufacturing, at 22 vehicle maintenance sites throughout Japan and two truck body manufacturing sites.



## IT systems

We provide IT consulting, system design, operation, maintenance, and management services, which leverage our long track record and accumulated know-how in the logistics industry.



## Settlement services

We operate a logistics settlement business, highlighted by Sagawa Express's proprietary cash-on-delivery service "e-Collect" and a variety of other financial services.



## Temporary staffing

We provide dispatch personnel services and human resources recruitment services mainly to bolster staffing at logistics sites and support about 20,000 regular staff.

## Group companies



### Sagawa Advance Co., Ltd.

Head office: 4F Shinsuna SGH Bldg.,  
1-8-10 Shinsuna, Koto-ku,  
Tokyo, Japan  
<https://sg-advance.co.jp/>



### SG Motors Co., Ltd.

Head office: 3F Shinsuna SGH Bldg. II,  
1-8-2 Shinsuna, Koto-ku,  
Tokyo, Japan  
<http://www.sg-motors.co.jp/>



### SG Systems Co., Ltd.

Head office: 25 Kamitobatsunoda-cho,  
Minami-ku, Kyoto-shi,  
Kyoto, Japan  
<https://www.sg-systems.co.jp/>



### SG Fielder Co., Ltd.

Head office: 2F JMF-Bldg Toyochō 02,  
1-6-35 Shinsuna, Koto-ku,  
Tokyo, Japan  
<https://www.sg-fielder.co.jp/>



### Nouvelle Golf Club Co., Ltd.

Head office: 3151-1 Kanaya-gou,  
Oamishirasato-shi, Chiba,  
Japan  
<http://www.nouvelle-gc.co.jp/>



### Sagawa Forestry Co., Ltd.

Head office: 68 Kamitobatsunoda-cho,  
Minami-ku, Kyoto-shi,  
Japan  
<https://www.sg-hldgs.co.jp/sagawa-fore/>



GOAL Advanced Logistics Project Team

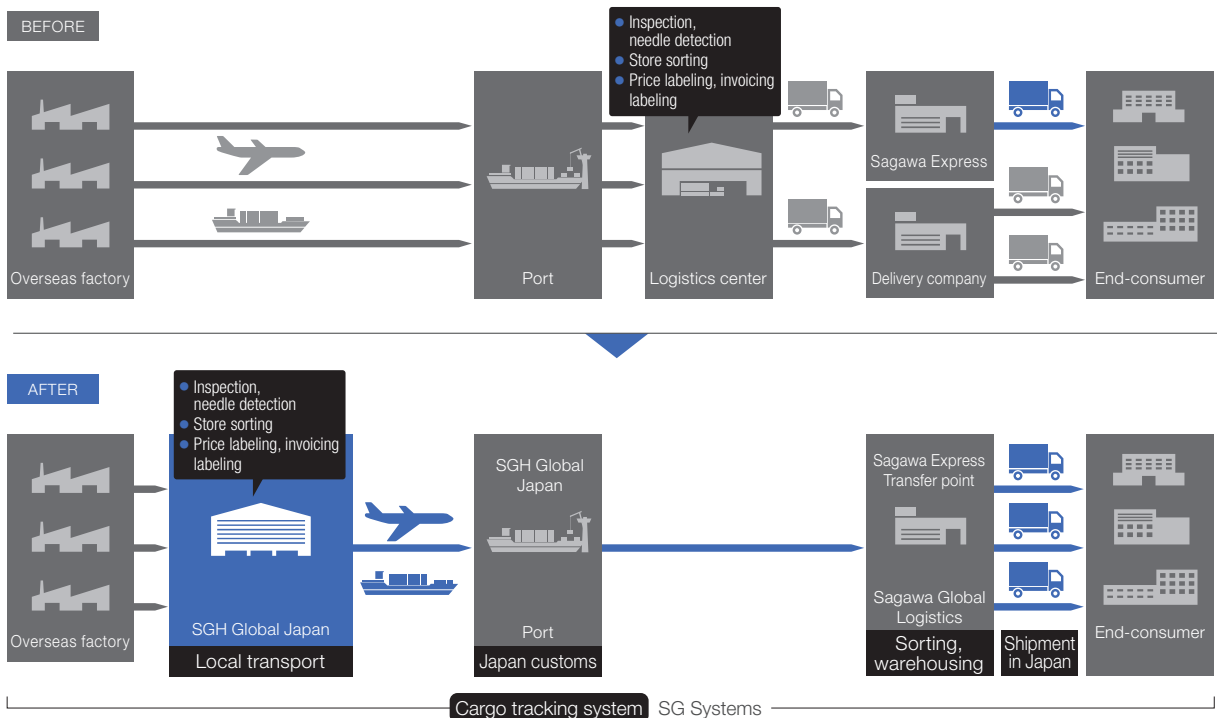
# GOAL<sup>®</sup>

( GO Advanced Logistics )

## Smart Import



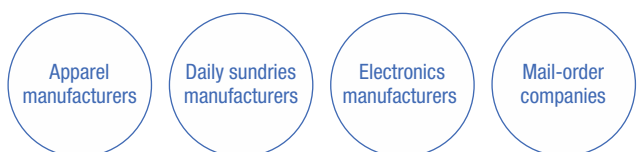
Our integrated logistics service delivers products from overseas factories to end-consumers in Japan, optimizing logistics costs, and shortening lead times.



### Solution benefits

- ☒ Cost optimization
- ☒ Lead time reduction
- ☒ Combinable with other Group services

### Ideal for:





# Customized solutions transform logistics into a value chain.

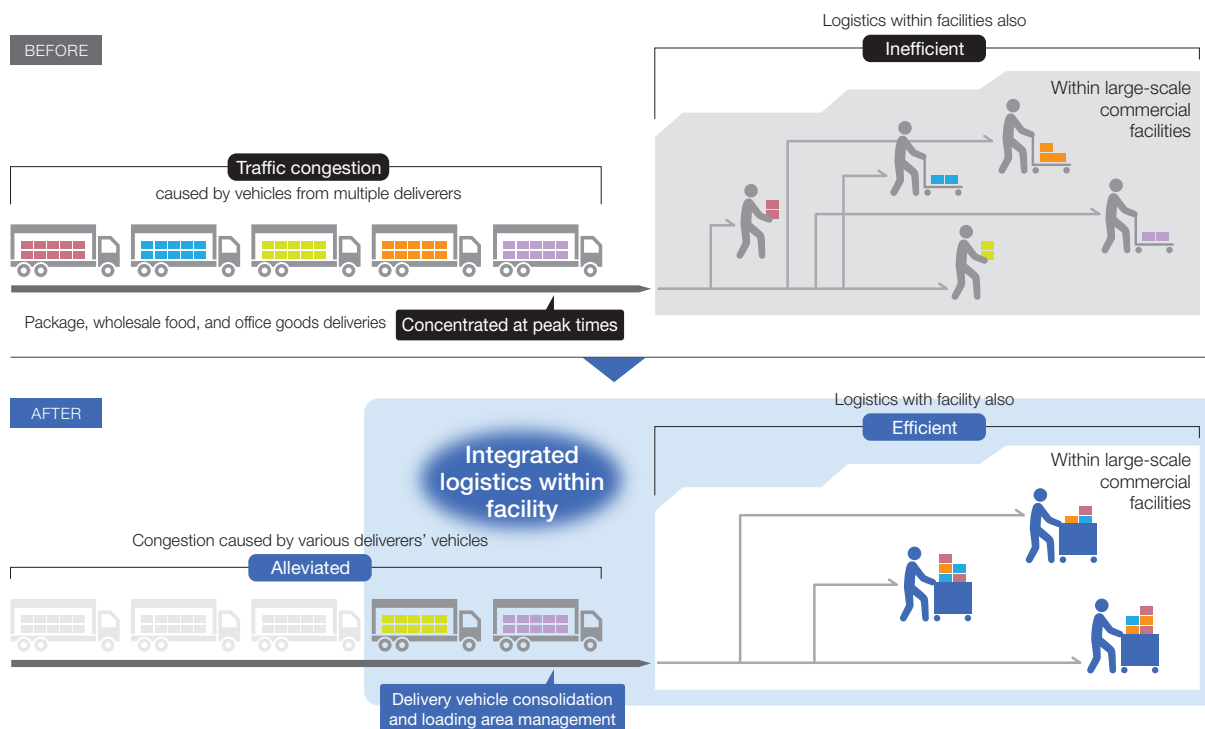
GOAL® stands for “GO Advanced Logistics”.

GOAL is our specialized project teams, which work hand-in-hand with customers to solve logistics challenges and achieve a “Goal” using advanced logistics know-how.

## Facility logistics



Facility logistics systems ensure an efficient flow of people, goods, vehicles, and information by integrating logistics management at large-scale multipurpose facilities.



### Solution benefits

- ☒ Delivery vehicle congestion alleviated
- ☒ Secure, efficient delivery to facility tenants
- ☒ Improved security through facility access management
- ☒ Reduced CO<sub>2</sub> emissions in local areas, reduced environmental burden

### Ideal for:



## SG Holdings Group By the Numbers

### Global network

**34** countries and regions

**142** companies



### External network

Line-haul transportation partner companies:



approximately **310**

Delivery supporters:



approximately **3,600**

TMS partner companies:



approximately **1,620**

### Employees

**94,087**

Total number of employees of all Group companies

- Average age **41.4**
- Regular employees **53.1%**  
Other types of employees **46.9%**
- Delivery employees **75,105**
- Non-Japanese employees **7,806**

Ratio of female employees **33.5%**



Female 31,519

Male 62,568

### Number of vehicles

**27,435**

Total number of vehicles owned by all Group companies



### Operation sites

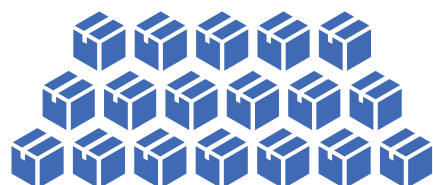
**1,462**



Total number of sites including head offices, offices, sales sites, etc.

### Number of packages handled (in Japan)

**1.410** billion



Cumulative number of packages handled by SG Holdings Group's main delivery services in FY2022

### Area of company-owned forests

**862.59** ha  
(183 times the area of Tokyo Dome)

Total land area of forests owned by Group companies Sagawa Forestry and Sagawa Express in Kochi Prefecture, Tokushima Prefecture, and the Tokyo metropolitan area.

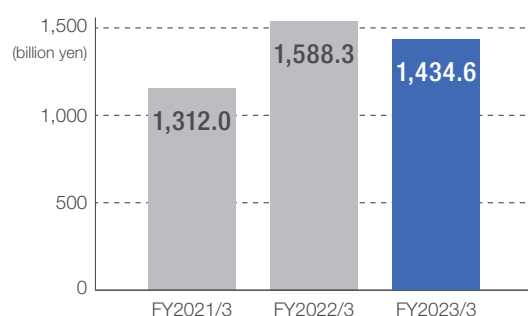


## Financial and Operating Results

### Operating revenue

In the Delivery Business, the number of packages handled in express package delivery services was steady, backed by the expansion of the e-commerce market, but cargo volume in the Logistics Business decreased significantly. As a result, consolidated operating revenue decreased 9.7% year on year to 1,434.609 billion yen.

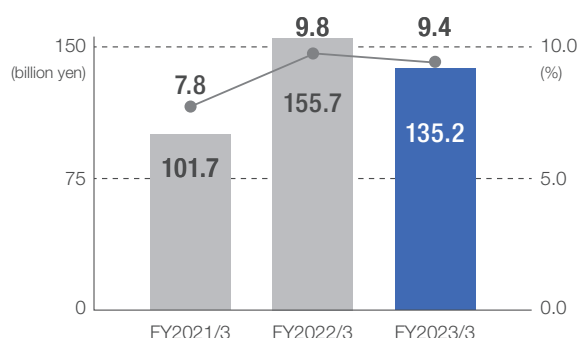
**9.7%** ↓  
**1,434.609** billion yen.



### Operating income and operating margin

Operating income decreased 13.1% year on year to 135.2 billion yen, along with the operating revenue decline. Operating margin also decreased 0.4 points year on year to 9.4%.

**13.1%** ↓ **135.2** billion yen  
**0.4** points ↓ **9.4%**



### ROE

ROE increased 0.2 points from the end of the previous fiscal year to 24.1%.

**0.2** points ↑ **24.1%**

### Dividend payout ratio and EPS

The year-end dividend was 26.0 yen per share, for a dividend payout ratio of 25.6%. EPS was 199.56 yen per share.

**25.6%** **199.56** yen

R O E : Return on equity  
E P S : Earnings per share

All figures are from FY2023/3 results.

## CSR Activities

We fulfill our corporate social responsibilities through a diverse program of activities.

### Safety and quality initiatives

We make safety and security our No. 1 priority in our role as an organ of society entrusted with the logistics function of the social infrastructure.



#### Driver education and training systems

We provide drivers with regular safety training, both when they enter the company and throughout their careers, to reduce traffic accidents and ensure safe driving at all times.

### Diversity initiatives

We aim to be an organization where a diverse range of talent can thrive, no matter their gender, age, or nationality.



#### Promotion of active roles for female employees

We aim for a system whereby female employees generate 30% of Group revenues. We have established a system to support women's empowerment, such as implementing "Women's Career Support Training" for supporting career development.

### Environmental initiatives

We are promoting environmentally conscious activities for the Earth as a logistics company operating vehicles in its business.



#### Low-emissions vehicles

We are introducing hybrid, electric, and natural gas and other low-emissions trucks in order to reduce CO<sub>2</sub> emissions from transportation and delivery.



#### Conserving bountiful forests for the future

We continually maintain the forests we own in the Shikoku region of Japan, as a way to contribute to the public functions of the forest, such as helping to absorb CO<sub>2</sub>, conserve the soil, cultivate clean water sources, and promote biodiversity.

## Other activities

### SGH Foundation



#### Scholarships for exchange students

We provide scholarships to private-paying Southeast Asian students studying in Japan as a way to promote international exchanges and friendship between Japan and Southeast Asia.



#### Cancer research support

We provide financial support for basic and clinical cancer research, as well as for cancer nursing research, as a way to improve medical welfare.



#### International economic cooperation

We accept international trainees and offer intensive training courses on logistics in order to develop logistics personnel and promote the growth of developing Asian nations.

### SGH Culture and Sports Promotion Foundation Sagawa Art Museum



Image of Sagawa Art Museum located alongside Lake Biwa

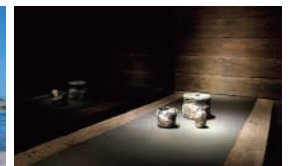


Image of Kichizaemon Raku Pavilion

The museum opened in March 1998 with the goal of promoting arts and culture. Separate pavilions are dedicated to Ikuo Hirayama, Churyo Sato, and Kichizaemon Raku, representing the fifteenth generation of ceramics masters. Each pavilion has separate themes and holds special exhibits.

#### Official sports clubs

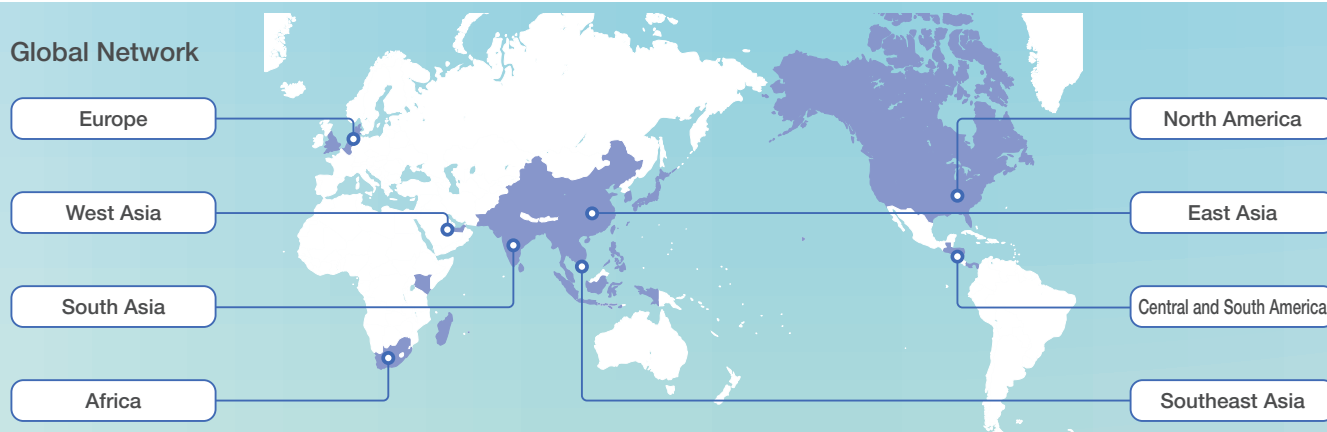
#### SG Holdings Track and Field Club

#### SG Holdings Women's Softball Club

## Sites Outside Japan

SG Holdings Group has operations in 34 countries and regions around the world.

### Global Network



### List of Overseas Group Companies

#### East Asia

**China**  
Shanghai Runbow Logistics & Technology Co., Ltd.  
Shanghai Sagawa HongMai Logistics Co., Ltd.  
Beijing Runbow Wuyuan Logistics LLP  
Shenyang Runbow Supply Chain Technology Co., Ltd.  
Shanghai Jiangping Chemical Products Transportation Co., Ltd.  
Shanghai Runbow Industrial Co., Ltd.  
Shanghai Runbow Logistics Co., Ltd.  
Tianjin Hongdi Supply Chain Management Co., Ltd.  
Inner Mongolia Hongtie Multimodal Transport Logistics Co., Ltd.  
Shanghai New Wonder Software Co., Ltd.  
Shanghai Hongxizhao Environmental Protection Technology Co., Ltd.  
Kunshan Runbow Supply Chain Technology Co., Ltd.  
Guodian Golmud Photovoltaic Power Generation Co., Ltd.  
Sagawa Express International Logistics (Shanghai) Co., Ltd.\*  
Sagawa Express International Logistics (Shenzhen) Co., Ltd.\*  
Expo Freight (Shanghai) Limited  
Expo Freight (Shenzhen) Limited  
Wuxi Feisu Logistics Information Technology Co., Ltd.

**Hong Kong**  
Sagawa Express (H.K.) Co., Ltd.  
Expo Freight (Hong Kong) Ltd

**Korea**  
SAGAWA LOGISTICS KOREA CO., LTD.

**Taiwan**  
HCT Sagawa Express Co., Ltd.  
EFL Taiwan (Pvt) Ltd

\*The company name has been changed to the one stated as of May 1, 2023

#### Southeast Asia

**Cambodia**  
Expolanka Freight (Cambodia) Ltd

**Indonesia**  
PT. EFL Global Indonesia

**Laos**  
SG SAGAWA (THAILAND) CO., LTD. VIENTIANE BRANCH

**Malaysia**  
EFL Malaysia Sdn. Bhd

**Myanmar**  
EXPO Freight Limited

**Philippines**  
SAGAWA EXPRESS PHILIPPINES INC.  
SAGAWA GLOBAL LOGISTICS (PHILIPPINES) INC.  
Expolanka Freight (Philippines) Inc.

**Singapore**  
SG SAGAWA AMERIOD PTE. LTD.  
EFL Global Logistics (Pte) Ltd  
AMGAS ASIA PTE. LTD.  
SG HOLDINGS GLOBAL PTE. LTD.

**Thailand**  
SG SAGAWA (THAILAND) CO., LTD.  
SAGAWA EXPRESS (THAILAND) CO., LTD  
Expo Freight Holdings (Thailand) Limited  
EFL Global (Thailand) Ltd

**Vietnam**  
SAGAWA EXPRESS VIETNAM CO., LTD.  
SG SAGAWA VIETNAM CO., LTD.

#### South Asia and West Asia

Expolanka Freight (Vietnam) Ltd  
SG MOTORS VIETNAM CO., Ltd.

**Bangladesh**  
Travel Classic (Pvt) Limited

**India**  
Expo Freight Private Limited  
TT Aviation Handling Services (Private) Limited  
EFL Express Private Limited  
AVS Cargo Management Services Pvt Ltd  
AMZ Logistics Solutions Private Limited  
EFL Global Projects Private Limited  
International Sky Services India Pvt Ltd  
Expolanka Agri Exports (Private) Limited

**Republic of Maldives**  
Classic Travel Maldives (Pvt) Ltd  
Amana Takaful Maldives PLC

**Sri Lanka**  
EXPOLANKA HOLDINGS PLC  
Liberty Tourism Lanka (Pvt) Ltd  
Expolanka (Pvt) Limited  
Tropical Life International (Pvt) Ltd  
ITX 360 (Pvt) Ltd  
Classic Travel (Pvt) Ltd  
Sunpower Travels (Pvt) Ltd  
Bongo (Pvt) Ltd  
Travel Bridge (Pvt) Ltd  
Classic Destinations (Pvt) Ltd  
Gabo Travels Overseas (Private) Limited  
Gabo Travels (Pvt) Ltd  
Gabo Holidays (Private) Limited  
Expo Visa Services (Pvt) Ltd  
Expolanka Freight (Pvt) Limited  
Oki Doki (Pvt) Ltd  
Quicke Delivery Solutions (Pvt) Limited  
Peri Logistics (Pvt) Ltd  
EFL Transport (Pvt) Ltd  
Logistics Park (Pvt) Ltd  
MIRAI Relocations (Pvt) Ltd  
SG Logistics (Pvt) Ltd  
EFL Global HQ (Pvt) Ltd  
EFL Global Freeport (Pvt) Ltd  
EFL Hub (Pvt) Ltd  
Excelsior Logistics (Pvt) Ltd  
Freightcare (Pvt) Ltd  
Globe Air (Pvt) Ltd  
International Airline Service (Pvt) Ltd  
Alpha Aviation Pvt Ltd  
Alpha Air Solutions Pvt Ltd  
EAM Global (Pvt) Ltd  
AVS Cargo International (Pvt) Ltd

**United Arab Emirates**  
Expolanka Freight FZCO  
Airline Cargo Resources FZCO  
Expolanka Freight Dubai LLC

#### Europe

**Belgium**  
EFL Global B.V.

**Denmark**  
Expo Freight Denmark ApS

**England & Wales**  
Locher Evers International Limited

**Netherlands**  
EFL Europe B. V.

#### North America

**Canada**  
Locher Evers International Inc  
LEI Customs Brokers Inc  
LEI Cartage Ltd.  
Westcon Terminals Limited  
Trans American Customs Brokers of Canada Ltd  
EFL Global Logistics Canada Ltd

**United States of America**  
SG SAGAWA USA INC.  
EFL Global LLC  
Trans American Customhouse Brokers LLC  
Trans American Global Trade Services LLC  
Transure Express LLC  
Transparency Supply Chain Systems LLC  
Information Technology-Intelligent Solutions LLC  
EFL Container Lines LLC  
EFL Transportation LLC  
Seville Freight Systems Inc  
Seville Transfer Ltd  
EFL Brokerage LLC  
Seville Container Freight Station Inc  
IDEA Global LLC  
IDEA International LLC  
Interconexion: Distribuir Y Enviar Para Las Americas, LLC d/b/a IDEA, LLC  
Complete Transport Solutions Inc

#### Central and South America

**El Salvador**  
IDEA El Salvador S.A. de C.V  
Corporación K&C, S.A. de C.V

**Guatemala**  
IDEA Guatemala S.A

**Honduras**  
IDEA Honduras, S. de R.L. de C.V

**Nicaragua**  
IDEA Nicaragua de S.A

**Panama**  
EFL Global Panama S.A.

#### Africa

**Kenya**  
Air Sea Logistics Limited  
Expolanka Freight Ltd

**Madagascar**  
Expolanka Madagascar

**Mauritius**  
Expolanka Freight Ltd.

**Republic of South Africa**  
Expolanka Freight (Proprietary) Ltd

Current as of March 31, 2023

## Corporate Overview

Company Name: SG Holdings Co., Ltd.

Establishment: March 2006

Capital: 11,882,905,000 yen

Business Content: Formulation of Group management strategies, administration, and related business

Head Office: 68 Kamitobatsunoda-cho, Minami-ku, Kyoto-shi, Kyoto, Japan

Tel: 075-671-8600 Fax: 075-671-8607

Officers: Eiichi Kuriwada, Chairperson and CEO

Hidekazu Matsumoto, President and COO

Masahide Motomura, Director in charge of Delivery and Logistics Business

Katsuhiro Kawanago, Director in charge of Corporate Planning

Kimiaki Sasamori, Director in charge of Special Assignment

Mika Takaoka, Outside Director

Osami Sagisaka, Outside Director

Masato Akiyama, Outside Director

Satoshi Tajima, Outside Audit & Supervisory Board Member

Tomonari Niimoto, Audit & Supervisory Board Member

Kenichiro Okamura, Outside Audit & Supervisory Board Member

Yoshitaka Ooshima, Outside Audit & Supervisory Board Member

Employees: 94,087 (consolidated; as of March 31, 2023)



## Corporate History

1965	November	Sagawa Express is established.	2007	August	SG Realty Co., Ltd. is established.
1975	July	Kyoto Automobile Kogyo (current Sagawa Advance Services Co., Ltd.) is established.	2009	February	All shares in World Supply Co., Ltd. are acquired from World Logi Co., Ltd. to make the company a subsidiary.
1980	May	Sagawa Automobile Company (current SG Motors Co., Ltd.) is established.	2011	April	SG Expert Co., Ltd. is established. (Became defunct in October 2021 through the absorption-type merger with SG Systems Co., Ltd. as the surviving company.)
	September	Sagawa Air Service Co., Ltd. (current SGH Global Japan Co., Ltd.) is established.		April	SG Fielder Co., Ltd. is established.
1983	February	Sagawa Computer System (current SG Systems Co., Ltd.) is established.	2012	June	SG Holdings Global Pte. Ltd. is established.
1984	December	Sagawa Express nationwide longitudinal route network is completed.	2013	April	SG Assetmax Co., Ltd. is established.
1985	January	Sagawa Express National Freight Tracking System is launched.		May	Sagawa Global Logistics Co., Ltd. changes its name to SGH Global Japan Co., Ltd. and implements a company split to newly establish Sagawa Global Logistics Co., Ltd. to succeed the domestic logistics business.
1988	October	Tsubasa Transport (current SG Moving Co., Ltd.) becomes a subsidiary.		May	SG Holdings acquires Singapore logistics company Ameroid Logistics (S) Pte. Ltd. (current SG Sagawa Ameroid Pte. Ltd.) to strengthen the Singapore logistics business.
1990	August	Sagawa Express (H.K.) Co., Ltd. is established.		November	SG Sagawa USA, Inc. is established to provide high-quality integrated services leveraging the Group's extensive network in Japan.
	December	Sagawa Forestry Co., Ltd. is established.	2014	April	Sagawa Express establishes "GOAL", a Group-wide strategic sales development team.
1997	June	Sagawa Express Vietnam Co., Ltd. is established.		June	SG Holdings Global acquires Sri Lanka logistics company Expolanka Holdings PLC with the aim of expanding the international cargo business.
	August	Sagawa Express Philippines Co., Ltd. is established.	2015	March	SG Sagawa Vietnam Co., Ltd. is established to provide cargo and logistics services in Vietnam.
1998	March	Sagawa Express starts door-to-door delivery service Sagawa Express (current Hikyaku Express) service.	2016	March	SG Holdings enters into strategic capital and business alliance agreement with Hitachi Transport System, Ltd. (current LOGISTEED, Ltd.)
	July	Sagawa Express Singapore Co., Ltd. is established (merged into SG Sagawa Ameroid Pte. Ltd. in 2017)		November	Phat Loc Express and Trading Joint Stock Company acquired with the aim of expanding and strengthening the Vietnam delivery business and building the customer base (name changed to SG Sagawa Express Vietnam, LLC in March 2017 and later dissolved following absorption-type merger into surviving company SG Sagawa Vietnam Co., Ltd.)
1999	March	Sagawa Express starts Hikyaku Cool Express chilled service.		December	VST Co., Ltd. (current Sagawa Humony Co., Ltd.) becomes a subsidiary with the aim of expanding the telegram-like services business.
	June	Sagawa Express commences online package inquiry service on company homepage.	2017	December	SG Holdings is listed on the First Section of the Tokyo Stock Exchange.
2000	March	Sagawa Express starts Hikyaku Cool Express frozen service.	2019	May	Established SG Motors Vietnam Co., Ltd. for the purpose of supplying vehicle refrigeration equipment in Vietnam.
	March	Sagawa Express starts delivery time selection service.	2020	March	Acquired Shanghai Runbow Logistics & Technology Co., Ltd. for the purpose of expanding logistics business in East Asia and China.
2001	September	Nouvelle Golf Club is established.	2022	March	Transited from the First Section of the Tokyo Stock Exchange to the Prime Market of the Tokyo Stock Exchange in accordance with market restructuring.
2003	September	Poly-Sagawa Logistics CO.,Ltd. (current Sagawa Express International Logistics (Shenzhen) Co.,Ltd.) is established.			
2004	June	Shanghai Poly-Sagawa Logistics CO.,Ltd. (current Sagawa Express International Logistics (Shanghai) Co.,Ltd.) is established.			
	June	Tianjin Poly-Sagawa International Trading Co., Ltd. is established.			
2005	January	Sagawa Express Korea (current Sagawa Logistics Korea Co., Ltd.) is established.			
	March	Sagawa Financial is established. (Became defunct in October 2021 through the absorption-type merger with SG Systems Co., Ltd. as the surviving company.)			
	September	Sagawa Express International Taiwan Corp. is established.			
2006	March	Pure holding company structure is adopted and SG Holdings Co., Ltd. is established.			
2006	June	SG Holdings Co., Ltd. acquires shares in Sagawa Global Logistics Co., Ltd. (current SGH Global Co., Ltd.) and 10 other companies.			

## **SG HOLDINGS CO., LTD.**

68 Kamitobatsunoda-cho, Minami-ku, Kyoto-shi, Kyoto, 601-8104 Japan  
Tel: 075-671-8600

<https://www.sg-hldgs.co.jp/en/>